

REV	LOCATIONS	DESCRIPTION	DATE	REVISER	APPD
1	△	Change the structure and size	24/AUG/20	KATE	CHERRY
2	△	Add marking code	15/MAY/25	KATE	LEO

SPECIFICATIONS

Electrical Characteristic
 Current Rating:
 Signal contacts: 7.5A
 Power contacts: 10 to 40A
 Voltage Rating: 300V
 Contact Resistance: 5mΩ Max.
 Insulation Resistance: 5000 MΩ Min.
 Dielectric Withstanding Voltage: 1000V AC r.m.s Min
 Temperature Range—Operating: -55°C ~ +105°C

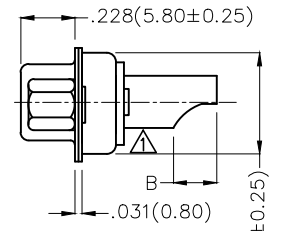
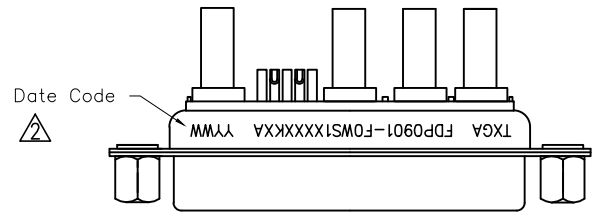
Material and plating
 Shell: Steel, Nickel Plated 80μ" Min (For Black Resin)
 Stainless Steel, Nickel Plated 80μ" Min (For Green Resin)
 Back Shell: Steel, Tin Plated 100μ" Min (For Black Resin)
 Stainless Steel, Nickel Plated 80μ" Min (For Green Resin)
 Insulator: Glass Filled Thermoplastic (UL 94V-0)
 Signal Contacts: Brass/ Gold Plated
 Power Contacts: Brass/ Gold Plated
 Nuts: Steel/ Nickel Plated

Type	Part NO.	øA	B	Wire	Current Rating(A)
A	FDP0901-FOWS1XXXXKAA	.098(2.50)	.177(4.5)	14#~16#	10
B	FDP0901-FOWS1XXXXKBA	.142(3.60)	.197(5.0)	10#~12#	20
C	FDP0901-FOWS1XXXXKCA	.173(4.40)	.217(5.5)	8#~10#	30
D	FDP0901-FOWS1XXXXKDA	.217(5.50)	.217(5.5)	6#~8#	40

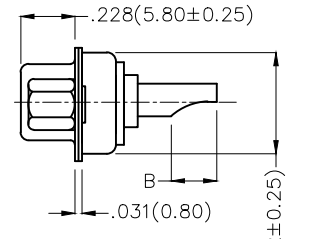
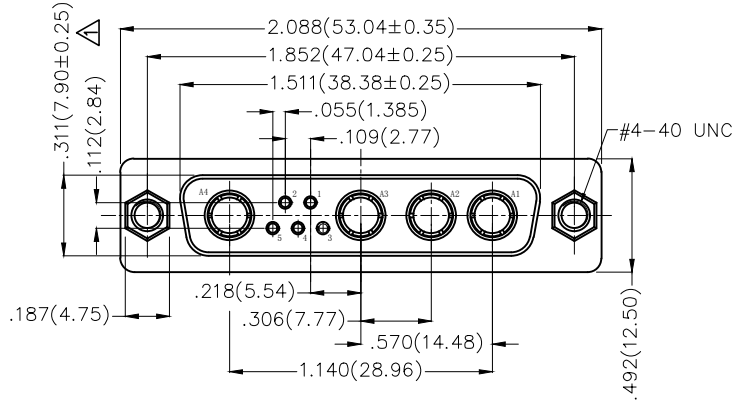
Ordering Information

FDP 09 01 — F0 W S 1 XX XX K X A
 1 2 3 4 5 6 7 8 9 10 11 12

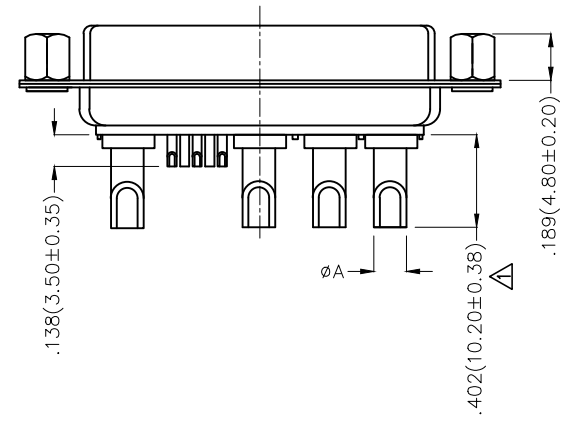
1 Category FDP-Hight current D-SUB connector	2 Circuits 09-9W4	3 Distinction No. 01	4 Type F0-Female	5 Assembly Layout W-Welding Type	6 Entry Angle S-180° Vertical
7 Plating 1-Gold Plated	8 Thickness of Plating 03-3μ" 15-15μ" Custom Plate Available	9 Color-Resin K6-Black GN-Green	10 Packaging K-Tray	11 Distinction Type A-Type A B-Type B C-Type C D-Type D	12 Product Type A-Front Nut (H=4.8mm)



TYPE D

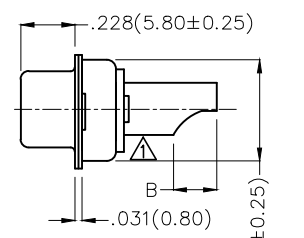
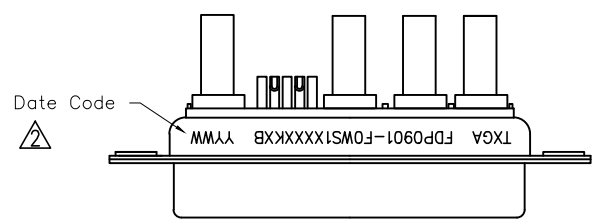


TYPE A,B,C

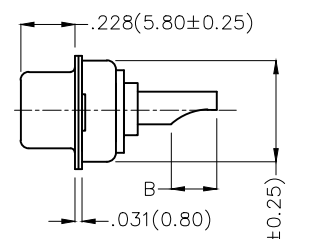
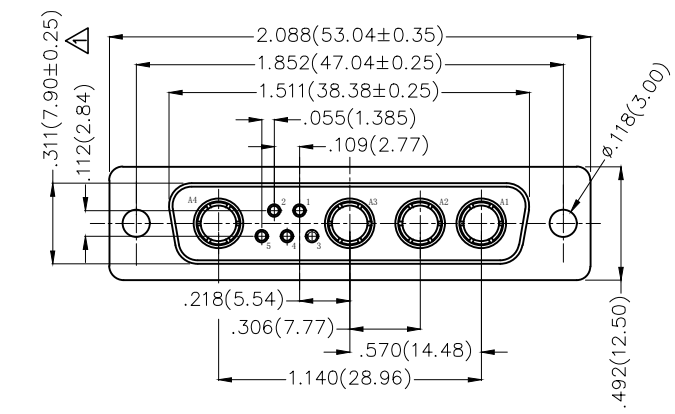


THIRD ANGLE PROJECTION	GENERAL TOLERANCES (UNLESS SPECIFIED)		APPROVE BY FRANK	DATE 19/JUL/13	PART NO. FDP0901-FOWS1XXXXKXA	ITEM NO. FDP0901-F	 Building Technology Cornerstone
	DESIGN UNITS Inch (metric)	X.±.012(0.30) X.X±.008(0.20)	X'±5' .X'±2'	CHECKED BY CHERRY	DATE 19/JUL/13	TITLE Hight current D-SUB connector 9W4 180° Vertical Female	
SCALE 5:1	SIZE A4	X.XX±.006(0.15) X.XXX±.004(0.10)	.XX'±1' .XXX'±0.5'	DRAWN BY JACOB	DATE 19/JUL/13	THIS DRAWING CONTAINS INFORMATION THAT IS PROPRIETARY TO TXGA INDUSTRIAL ELECTRONICS(S.Z)CO.,LTD AND SHOULD NOT BE USED WITHOUT WRITTEN PERMISSION	

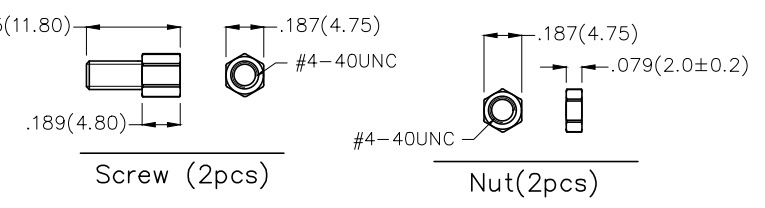
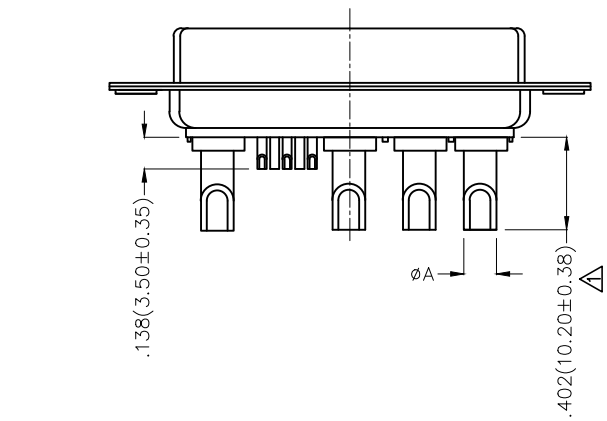
REV	LOCATIONS	DESCRIPTION	DATE	REVISER	APPD
1	△	Change the structure and size	24/AUG/20	KATE	CHERRY
2	△	Add marking code	15/MAY/25	KATE	LEO



TYPE D



TYPE A,B,C



SPECIFICATIONS

Electrical Characteristic
 Current Rating:
 Signal contacts: 7.5A
 Power contacts: 10 to 40A
 Voltage Rating: 300V
 Contact Resistance: 5mΩ Max.
 Insulation Resistance: 5000 MΩ Min.
 Dielectric Withstanding Voltage: 1000V AC r.m.s Min
 Temperature Range-Operating: -55°C ~ +105°C

Material and plating

Shell: Steel, Nickel Plated 80μ" Min (For Black Resin)
 Stainless Steel, Nickel Plated 80μ" Min (For Green Resin)
 Back Shell: Steel, Tin Plated 100μ" Min (For Black Resin)
 Stainless Steel, Nickel Plated 80μ" Min (For Green Resin)
 Insulator: Glass Filled Thermoplastic (UL 94V-0)
 Signal Contacts: Brass/ Gold Plated
 Power Contacts: Brass/ Gold Plated
 Screws: Copper alloy/ Nickel Plated
 Nuts: Steel/ Nickel Plated

Type	Part NO.	φA	B	Wire	Current Rating(A)
A	FDP0901-FOWS1XXXXKAB	.098(2.50)	.177(4.5)	14#~16#	10
B	FDP0901-FOWS1XXXXKBB	.142(3.60)	.197(5.0)	10#~12#	20
C	FDP0901-FOWS1XXXXKCB	.173(4.40)	.217(5.5)	8#~10#	30
D	FDP0901-FOWS1XXXXKDB	.217(5.50)	.217(5.5)	6#~8#	40

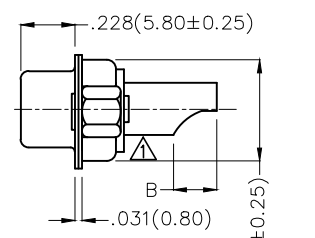
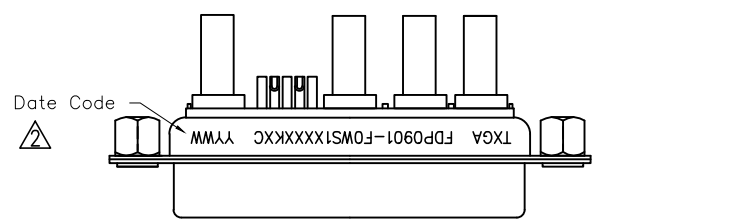
Ordering Information

FDP 09 01 - F0 W S 1 XX XX K X B
 1 2 3 4 5 6 7 8 9 10 11 12

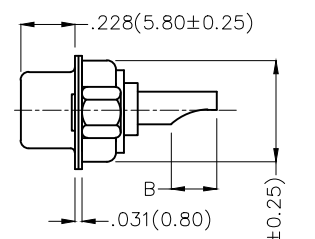
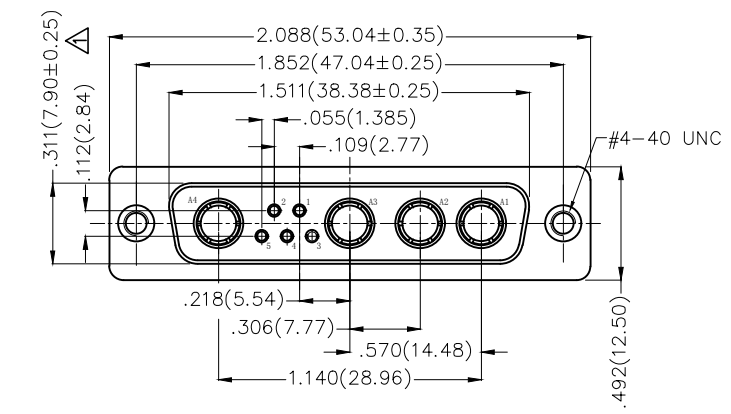
1 Category FDP-Hight current D-SUB connector	2 Circuits 09-9W4	3 Distinction No. 01	4 Type F0-Female	5 Assembly Layout W-Welding Type	6 Entry Angle S-180° Vertical
7 Plating 1-Gold Plated	8 Thickness of Plating 03-3μ" 15-15μ" Custom Plate Available	9 Color-Resin K6-Black GN-Green	10 Packaging K-Tray	11 Distinction Type A-Type A B-Type B C-Type C D-Type D	12 Product Type B-With Screws and Nuts

THIRD ANGLE PROJECTION	GENERAL TOLERANCES (UNLESS SPECIFIED)		APPROVE BY FRANK	DATE 19/JUL/13	PART NO. FDP0901-FOWS1XXXXKXB	ITEM NO. FDP0901-F	 Building Technology Cornerstone
	DESIGN UNITS Inch (metric)	X.±.012(0.30)	X'.±5'	CHECKED BY CHERRY	DATE 19/JUL/13	TITLE Hight current D-SUB connector 9W4 180° Vertical Female	
SCALE 5:1		SIZE A4	X.XX±.006(0.15)	.XX'±1'	DRAWN BY JACOB	DATE 19/JUL/13	THIS DRAWING CONTAINS INFORMATION THAT IS PROPRIETARY TO TXGA INDUSTRIAL ELECTRONICS(S.Z)CO.,LTD AND SHOULD NOT BE USED WITHOUT WRITTEN PERMISSION
		X.XXX±.004(0.10)	.XXX'±0.5'				

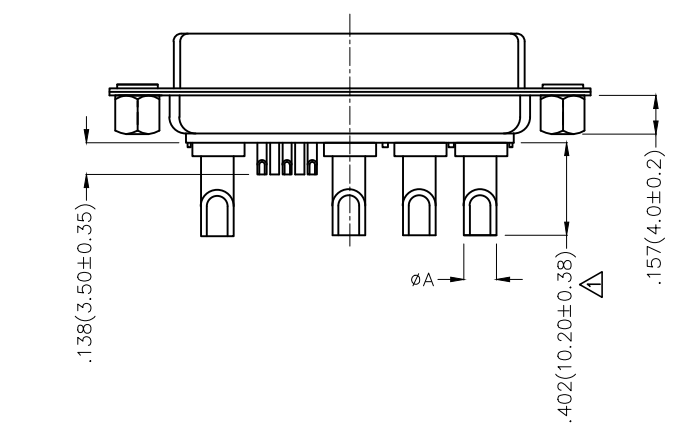
REV	LOCATIONS	DESCRIPTION	DATE	REVISER	APPD
1	△	Change the structure and size	24/AUG/20	KATE	CHERRY
2	△	Add marking code	15/MAY/25	KATE	LEO



TYPE D



TYPE A,B,C



SPECIFICATIONS

Electrical Characteristic
 Current Rating:
 Signal contacts: 7.5A
 Power contacts: 10 to 40A
 Voltage Rating: 300V
 Contact Resistance: 5mΩ Max.
 Insulation Resistance: 5000 MΩ Min.
 Dielectric Withstanding Voltage: 1000V AC r.m.s Min
 Temperature Range—Operating: -55°C ~ +105°C

Material and plating

Shell: Steel, Nickel Plated 80μ" Min (For Black Resin)
 Stainless Steel, Nickel Plated 80μ" Min (For Green Resin)
 Back Shell: Steel, Tin Plated 100μ" Min (For Black Resin)
 Stainless Steel, Nickel Plated 80μ" Min (For Green Resin)
 Insulator: Glass Filled Thermoplastic (UL 94V-0)
 Signal Contacts: Brass/ Gold Plated
 Power Contacts: Brass/ Gold Plated
 Nuts: Steel/ Nickel Plated

Type	Part NO.	øA	B	Wire	Current Rating(A)
A	FDP0901-FOWS1XXXXKAC	.098(2.50)	.177(4.5)	14#~16#	10
B	FDP0901-FOWS1XXXXKBC	.142(3.60)	.197(5.0)	10#~12#	20
C	FDP0901-FOWS1XXXXKCC	.173(4.40)	.217(5.5)	8#~10#	30
D	FDP0901-FOWS1XXXXKDC	.217(5.50)	.217(5.5)	6#~8#	40

Ordering Information

FDP 09 01 — F0 W S 1 XX XX K X C
 1 2 3 4 5 6 7 8 9 10 11 12

1 Category FDP-Hight current D-SUB connector	2 Circuits 09-9W4	3 Distinction No. 01	4 Type F0-Female	5 Assembly Layout W-Welding Type	6 Entry Angle S-180° Vertical
7 Plating 1-Gold Plated	8 Thickness of Plating 03-3μ" 15-15μ" Custom Plate Available	9 Color-Resin K6-Black GN-Green	10 Packaging K-Tray	11 Distinction Type A-Type A B-Type B C-Type C D-Type D	12 Product Type C-Back Nut (H=4.0mm)

THIRD ANGLE PROJECTION	GENERAL TOLERANCES (UNLESS SPECIFIED)		APPROVE BY FRANK	DATE 19/JUL/13	PART NO. FDP0901-FOWS1XXXXKXC	ITEM NO. FDP0901-F	 Building Technology Cornerstone
	DESIGN UNITS Inch (metric)	X.±.012(0.30) X.X±.008(0.20)	X'±5' .X'±2'	CHECKED BY CHERRY	DATE 19/JUL/13	TITLE Hight current D-SUB connector 9W4 180° Vertical Female	
SCALE 5:1	SIZE A4	X.XX±.006(0.15) X.XXX±.004(0.10)	.XX'±1" .XXX'±0.5'	DRAWN BY JACOB	DATE 19/JUL/13	THIS DRAWING CONTAINS INFORMATION THAT IS PROPRIETARY TO TXGA INDUSTRIAL ELECTRONICS(S,Z)CO.,LTD AND SHOULD NOT BE USED WITHOUT WRITTEN PERMISSION	